



Glenbrae School

2024 March Newsletter

***See how we grow, believe and
succeed!***

103 Leybourne Circle • Glen Innes • Auckland

Phone: 09 528 5025

www.glenbrae.school.nz

Facebook: Glenbrae School

Dear Whānau, Parents and Caregivers,

Mālo ni, Fakaalofa lahi atu, Kia orāna, Tālofa lava, Mālō e lelei, Talofa, Noa'ia, Ni sa bula vinaka, Mauri, Tēnā koutou katoa and warm greetings to you all.

We have had an amazing start to our year. Our students are looking great in their black shoes and new uniforms for the year, and we have welcomed a number of new students into our school. It is heartening to know that we are the school of choice for so many families.

A huge highlight this term was camp for our Year 7/8s. The school board generously paid for camp this year for our students. This meant they all got to go for free. The students really enjoyed camp this year up in Mangawhai - and the weather was fantastic.

Another highlight was our trip to Tiritiri Matangi island in the Hauraki Gulf. This was a wonderful experience and a great chance to deepen our understanding of our environment as kaitiakitanga of our community.

We have refreshed our school values signage in our classrooms - check out what this looks like in our newsletter. Our students, staff and community are living and breathing these values each and every day at school.

We are looking forward to hosting your family on Wednesday 20th March for our 3 way conference and Visual Art Exhibition in the hall, which will highlight the learnings of our current inquiry - Expressing ourselves, where our students are using visual arts to express their culture and identity.

I hope you enjoy this newsletter as much as we enjoyed creating it - check out our class pages this month!

Let's grow, believe, succeed!

Ngā mihi nui

Robbie Perreau
Principal

OUR VALUES



WHAKAWHANAUNGATANGA Respecting our relationships

We form and maintain positive and respectful relationships with each other.



AKO Respecting our learning

We always value teaching and learning.



KAITIAKITANGA Respecting our environment

We always respect and look after our environment.



AROHA Caring for each other

We show caring, kindness, compassion and empathy.



Softball Match against Stanhope School

On Friday 1st March, we hosted Stanhope School in a very eventful softball match. We always love friendly competition and we are looking forward to returning the favour of a visit later to Stanhope School!



Tamaki College Technology for our Year 7/8s

We have begun our weekly technology sessions up at Tamaki College and our students are loving experiencing a taste of College life.



Attendance at School

We love having your children here at school! They bring life, energy and learning! Whilst we know that some days we have appointments, family events and celebrations (and long extended holidays), we feel sad when our students miss out on school unnecessarily, so we wanted to share these facts with you:

If your child misses:	That equals:	Which is:	And over 13 years of schooling, that is:
1 day every 2 weeks	20 days per year	4 weeks per year	Nearly 1.5 years
1 day per week	40 days per year	8 weeks per year	Over 2.5 years
2 days per week	80 days per year	16 weeks per year	Over 5 years
3 days per week	120 days per year	24 weeks per year	Nearly 8 years

Whānau Attendance Statistics

We are going to start publishing school whānau attendance statistics to help encourage our students to attend school regularly - this will help their school whānau earn points towards the end of year whānau cup! Go kōwhai for an amazing start!

Week 5 attendance Statistics:

Kauri - 84.34% - 2nd =

Kōwhai - 86.38% - 1st

Nikau - 84.34% 2nd =

Rata - 83.38% 4th

Important Upcoming Dates

Fri 8th March	2pm Assembly - Room 7 hosting
Wed 20th March	3 way conferences and Art Exhibition (all day - no classes this day)
Fri 22nd March	2pm Assembly - Room 5 hosting
Wed 27th March	School Board Meeting 4pm
Fri 29th March	Easter Friday (Public Holiday)
Mon 1st April	Easter Monday (Public Holiday)
Tue 2nd April	Easter Tuesday (no school this day)

Updated Cell phones in School Policy

In line with new requirements, our cell phone policy at school is still the same - away for the day! Here is our formal policy regarding cell phones and personal digital devices:

Glenbrae School does not allow students to bring personal digital devices to school. These are not necessary to have during the day.

We discuss the school rules about personal digital devices at the beginning of the year, and throughout the year as needed. Any changes to our school rules are communicated to students and our school community.

Parent/Caregiver and student responsibilities

If a parent/caregiver needs to contact their child urgently during the day, they should call the office.

If a student brings a personal digital device to our school, the following guidelines apply:

- The school does not accept responsibility for lost, damaged, or stolen personal digital devices brought to the school but investigates any issues as appropriate.
- Should a student bring in a personal digital device, they must hand in their device to the office or their teacher at the beginning of the day, and can collect the device at the end of the day.

Personal digital devices may not be taken on EOTC events.

Students are expected to follow our [Digital Technology and Online Safety](#) policy when using personal digital devices on school property or the school network.

Inappropriate use

If we see a student using a personal digital device inappropriately, we confiscate it. After the student locks the device, we place it in the office to be collected at the end of the day.

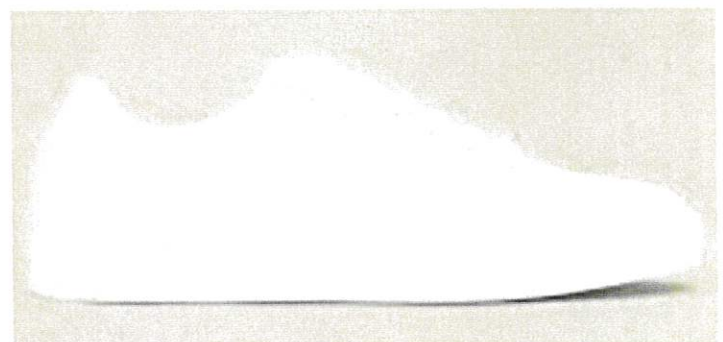
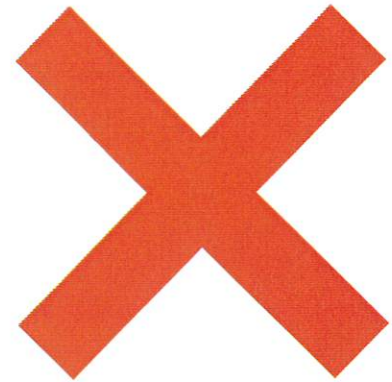
School Shoes - What is and isn't allowed!

Here are some shoes which are great for school



https://www.numberoneshoes.co.nz/kids/school-shoes?_sl=2
<https://www.thewarehouse.co.nz/c/clothing-shoes-accessories/school-uniforms-accessories/school-shoes>

Here are some shoes which are NOT allowed at school



MAUNGAKIEKIE-TĀMAKI UPCOMING EVENTS

20 24

Kiwi Bubble Soccer
@ Mt Wellington War Memorial Park
10am-12pm

Sat 24
Feb

Silent Disco Minecraft Edition
@ Mt Wellington Children's Park
10am-12pm

Sat 24
Feb



Tamariki Play
@ Dunkirk Rd Playground
3pm-5pm

Tues 27
Feb

Ako Hoe Waka
@ Pt England Beach
9am-1pm

Sat 9
March



Ako Hoe Waka
@ Pt England Reserve
10am-2pm

Sat 23
March



Scan the QR code for
more information

Ongoing Key Reminders and Notices

Valuables/money/phones that get brought to school and get lost are completely the child's responsibility and the school will not search for or be responsible for these lost items if they are brought to school!

Students are not permitted to bring mobile phones/smart watches to school. If they bring one, they need to hand it to their teacher to look after during the day.

Vaping or smoking on school grounds is completely unacceptable at Glenbrae School. Students who bring these items to school will face the consequences for doing so.

Glenbrae School has a uniform which is available for purchasing at the office. The correct school uniform needs to be worn every day, which includes a Glenbrae School hat during Terms 1 and 4.

If you have changed any of your contact details please keep the office informed. We need to be able to contact you in an emergency and these details are vital to be kept updated!

All of Glenbrae School's Policies and Procedures are available for viewing at anytime at www.glenbrae.schooldocs.co.nz. The username is **glenbrae** and the password is **glenbrae123**.

Absences - please call the office on 09 528 5025 if your child is not coming to school that day. If we do not hear from you, we will txt you and after numerous days away, we may have to place a referral to our attendance service for follow up.

Fizzy drink, lollies, chocolate, chewing gum etc are a big NO NO at school. If found, they will be confiscated and returned at the end of each day. We look forward to your support on this. We supply free lunches so there is no need to drop off lunch if you child has forgotten it that day!

Keep it named! Please name every piece of uniform your child has. This makes it so much easier to find when your little one may have left something behind.

OPEN DOOR POLICY Our school runs on an "Open Door Policy". This means that should you have any questions or concerns about anything please do not hesitate to contact us. Don't be a stranger, but pop in anytime you can. We'd love to see you! If at any time you wish to see any of your child's teachers about something specific please telephone the school to organize an appointment. At times there are bound to be issues that crop up and we encourage you to air your concerns but ask that you speak to the person involved first. If you have done this and feel there has been no success, you are more than welcome to see the relevant senior staff member or myself. If you are wanting information on your child's progress, it is advisable to book a time to see teacher. This will enable the teacher to give you the time you deserve to have the proper conversation. Classrooms are busy places in the mornings before school and immediately after, and it is not always possible for the teacher to give full attention to your queries if you do not book in advance.

All visitors to the school must sign in at the office upon arrival. This includes your high school aged students who return back to school!

Birthdays and New Students

Room 1

Sedna 14-01
Lucy 03-01
Michael 12-02
Jeremiah 15-01
Asi 15-01
Leata 03-02

Room 2

Sharuv 08-01
Leastra 19-12
John 22-01
Nejma 17-12
Angel-Lee 08-02

Room 3

Manahel 12-01
Damien 22-12
Asipesia 31-12
Tepola 31-12

Room 5

Semesi 05-02
Tamatoa 03-01
Lavenita 02-02
Retro 05-03

Room 6

Winter 19-12
Esme 24-12

Room 7

Gara 17-02
Elena 04-01
Daniel P 05-03

Room 8

Sesimani 01-02
Jacob 07-02
Adunia 05-01
Payton 25-02

New Students

Jeremiah Rm 1
Keni Rm 2
Milina Rm 1
Arion Rm 2
Artin Rm 1
Alimoni Rm 1
Asi Rm 1
Lucy Rm 1
Charm Rm 6
Leata Rm 1
Michael Rm 1
Sharuv Rm 2
Sam Rm 1
Taniela Rm 5
Jackson Rm 6
Connie Rm 7
Jeffrey Rm 5
Willow Rm 1

If we have inadvertently missed a birthday or a new student, please let the office know and we will include you in the next newsletter!

Tiritiri Matangi Island Trip Photos

Our Year 5/6s had an amazing adventure onto Tiritiri Matangi Island to explore the delicate environment which is being protected.



Uniform Reminders

Please ensure your child is wearing black shoes to school please. This is our school uniform. Please see some examples on what black school shoes are acceptable. Glenbrae School's uniform is the same for boys and girls, with girls having the option of wearing shorts or the skort. We encourage parents to purchase at least two school uniform T-shirts which have the school logo and a school uniform blue jumper which has our school logo on it. The black school shorts are to be worn in the summer months. Plain black trousers/long pants can be worn during the winter terms which are Term 2 and Term 3.

School Board Updates

The 2024 board meeting dates are as follows, at 4pm.

Wednesday 21st Feb
Wednesday 27th March
Wednesday 8th May
Wednesday 19th June
Wednesday 7th August
Wednesday 25th September
Wednesday 6th November
Thursday 12th December

Staff Announcement

Amy Tofa has won a facilitation role at Manaiakalani and will join their team in Term 2. Which means Amy's time at Glenbrae School will end at the conclusion of Term 1. We wish Amy all the best for her next step in her career. Mr Dupendar Nath will be the teacher for Room 7 in Term 2, and we will announce a future appointment shortly! Stay tuned.

Free Data

Glenbrae School's Website does not use any data, so you are free to browse away 24/7 without using your mobile data, if you use 2degrees, One NZ (formally Vodafone), Spark, Warehouse Mobile, Skinny, Slingshot or Orcon.

2024 Curriculum Overview

Glenbrae School Curriculum Overview 2024

Duration	Module	Learner Profile	Curriculum Focus	Big Idea
3 weeks	Ko wai tātou? Who are we? GBS values What does it look like?	Students contribute to a better world.	Social Sciences: Culture and Identity	Through our shared GBS values we are connected to each other, to the community and to the wider world.
4 weeks	Te whakapuaki i ahau Expressing myself	Students are empowered. Students are creative.	Visual Arts	Visual Arts is an effective way of expressing my culture and identity.
7 weeks	He kaupakihi matou We are entrepreneurs	Students contribute to a better world. Positive digital citizens.	Technology Mathematics	An entrepreneur identifies a need in the market and realises the opportunity.
6 weeks	He aha kei waho i te waahi? What is out there in space?	Students actively participate in the wider world.	Science: Planet Earth and Beyond	Curiosity is a strong driver to explain the unexplained about the solar system and beyond.
5 weeks	Te whakapuaki i a tātou ano Expressing ourselves	Students are empowered. Students are creative.	Performing Arts	Performing Arts is an expression of how people see and celebrate the world.
5 weeks	Te tinana me te hinengaro taurite Balanced body and mind	Students are empowered. Students contribute to a better world.	Health and PE: Personal Health	Leading a balanced life empowers us to enhance our personal wellbeing.
Duration	Module	Learner Profile	Curriculum Focus	Big Idea
5 weeks	Te mahi a nga hapori How Societies Work	Students actively participate in the wider world. Students are positive digital citizens.	Social Sciences: How societies work	If a society has not been conquered / colonised, how might they have evolved and developed?
4 weeks	Te whakaoti i ta tātou ako Wrapping Up Our Learning	Students are creative and empowered	Vi s ion: Grow, Believe, Succeed	We show our school values through our learning to Grow, Believe, Succeed

Email Addresses of Teaching Staff

Please contact your classroom teacher in the first instance if you have any questions or queries about your child's learning. The teachers will warmly welcome you to a meeting to discuss matters together in a collaborative way.

Room Number	Teacher Name	Teacher Email Address
Room 1	Viena Ripata (DP) and Bashnee Naidu	vienar@glenbrae.school.nz bashneen@glenbrae.school.nz
Room 2	Shadab Ayub	shadaba@glenbrae.school.nz
Room 3	Cardell Tino	cardellt@glenbrae.school..nz
Room 5	Jamin Paramore	jaminp@glenbrae.school.nz
Room 6	Andrew Te Aotonga (DP) Kris Sheath	andrewt@glenbrae.school.nz kriss@glenbrae.school.nz
Room 7	Amy Tofa	amyt@glenbrae.school.nz
Room 8	Shwe Kye	shwek@glenbrae.school.nz
Envirosciences and Release Teacher	Dupendar Nath	dupendarn@glenbrae.school.nz
Reading Recovery	Angela Kelly Jane Reading	angelak@glenbrae.school.nz janer@glenbrae.school.nz
Principal	Robbie Perreau	principal@glenbrae.school.nz

Student Support

School's Social Worker - Murray Te Huki - murrayt@atwc.org.nz

School's Nurse - Yun He - yunh@adhb.govt.nz

School's Therapist - Marion Gordon-Flower - marion@maurituituia.com

GLENBRAE SCHOOL

School Delivery Plan - Arts Therapy
Updated 12th January 2024



SCHOOL-WIDE KAUPAPA

Glenbrae School is a welcoming and diverse place where learners are challenged to become the best version of themselves. Their vision is to "Grow, Believe, Succeed". Teacher's have high expectations and value belonging and pride, connection to whakapapa, inquiry learning, creativity, being literate/numerate, empowered and independent.

OTHER WELLBEING INITIATIVES

- Fruit in Schools
- RTL B
- Clinical Psych team
- Social Worker (yr7/8)
- Learning Support team
- School Nurse
- At Lunch time in the Library are quiet activities, such as arts and crafts (RM 7)
- Liason - (Joe Turner)



SPACE/ROOM AVAILABLE

- Marion will be using the Green room on Tuesdays



STUDENT NEEDS

- Trauma
- Anxiety
- PD - sharing creative tools for kaiako to support self-care and 'regulation'
- Attendance

ABOUT THE THERAPIST



Marion Gordon-Flower is a Registered Creative Arts Therapist working for Mauri Tui Tuia in Tāmaki Makaurau/Auckland, Aotearoa/New Zealand. She has a background in teaching and has also worked in youth justice and mental health youth respite. She utilises person-centred, holistic approaches which foster *oranga* (wellbeing), *mana* (self-esteem), and *whakawhānau* (community connection and confidence). Her primary modality is visual arts however, she also incorporates music, and aspects of drama and expressive dance movement into her practice based on therapeutic needs and goals. She is an internationally published writer in creative arts therapies. Marion identifies as bicultural having grown up in a Tūhoe community in Te Urewera, Central North Island, and connection with Papatūānuku (nature) remains an important aspect of her lifestyle and work.

PLAN OF ACTION

- START DAY: 20th
- Marion to meet with Viena at 9am (SENCO)
- She will attend the staff briefing at 8.20am
- She will be available to connect with teachers/students/school while consent forms are being completed.

TERM ONE:

- She will have a case load of 4-5 individuals with a possible neuro diverse group.
- PD for kaiako to be considered.

SCHOOL SCHEDULE

Block 1 - 8.55 - 11.00

morning tea

Block 2 - 11.30 - 12.50

Lunch

Block 3 - 1.40 - 2.45



Awahi
Mai

Awahi
Atu



MAURI TUI TUIA
CREATIVE THERAPIES NEW ZEALAND

Camp Photos

Camp was incredible and gave our students the chance to increase their independence and resilience - as well as have a lot of fun!



Room 1 - Feb/Mar - 2024

It is now week 6 and children in Room 1 are settling in well and getting used to all classroom routines.

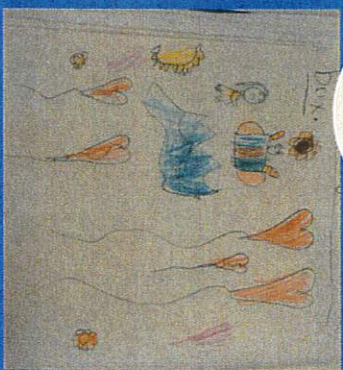
With reading we are keen to participate and eager to sound out words. We look at the pictures and try to relate it to our own experiences.

We are practising a lot of social skills and are having healthy interactions with each other.

We enjoy writing and drawing about family and personal experiences.

We love counting and identifying numbers.

We enjoy swimming, soccer, cricket and other extra-curricular activities too, such as Kiwi Can.



ROOM 2

Welcome to Room 2's newsletter! Come and check out what we have been doing!

We have gone straight into doing BSLA (Better Start Literacy Approach) lessons and have had so much fun learning our sounds! We are focusing on diagraphs now!



Right now for Maths we are diving into learning about Measurements! We are learning to order and compare objects or events by length, area, volume and capacity.



We enjoyed our swimming lessons! We have learnt skills that the water safety tutor has taught us and one of them is how we can safely get in and out of the pools. This has made our swimming lessons fun and safe and we have had a great time each swimming lesson!



The Mobile Library van made a visit to our school! It was so much fun going inside the van and choosing a book. We are so lucky that we get to choose ourselves!



ROOM 3 NEWSLETTER

MARCH EDITION

We're thrilled to share that our classroom has had an exceptional start to the year!

From exciting discoveries to meaningful connections, our students have embarked on a journey of learning and growth.



WHAT WE HAVE BEEN UPTO?

Getting to know each other and taking heaps of class photos!



Learning, using and sharing new ways to solve math problems.



Growing Together

Sharpening up on our Cricket and Football skills.



And yes... heaps of swimming lessons haha

Room 5



We've had a great start to our year in Room 5! It's been fun getting to know each other and starting our learning adventures.

We've jumped right into learning and have enjoyed it along the way. Every day is a chance to learn something new about our world and each other.



A highlight of our year so far was our trip to Tiritiri Matangi Island. We learned about New Zealand's nature, saw lots of plants and animals, and had a great time exploring.

We are excited for more learning and fun times ahead this year. There's so much more to discover and do!



ROOM SIX - NEWSLETTER!

Dear Whānau of Ruma Ono,

Welcome back everyone! We have had a great start to Term 1 and the children have been engaged in some exciting learning.

This year Andrew Te Aotonga (Mondays and Tuesdays) and Kris Sheath (Wednesdays Thursdays and Fridays) will be co-teachers in Room 6. Please feel free to contact us if you have any queries about your child's learning.

In week 1 we settled into new routines and started to explore things about ourselves as well as our new classmates. This tied in really well with our inquiry topic 'Ko Wai Au?' Who are we? We have been developing this over the term with activities about ourselves and others helping us to create a deeper understanding about our makeup.

In week 2 we had the famous GBS Water Wet Day where children from all ages could come together in their house groups to have a go with water activities and compete for house points. It was great to see how everyone came dressed up and had an amazing time with all the fun activities - some teachers even got a bit wet too! We also looked at other cultures celebrations around the world at this time doing some Chinese New Year Fact finding, activities and cooking.

Week 3 saw the Y4/5/6 students catching a bus then a ferry over to the famous wildlife sanctuary of TiriTiri Matangi. This was a great way to link learning about ourselves and others and the connections to the land. We had amazing guides who met us at the ferry and walked us up to the lovely lighthouse. On the way up we were given a glimpse of how the conservation takes place on the island, how we can do our bit to help and we were able to see a lot of amazing plants, insects and animals that have been able to flourish in this largely pest free environment.

Swimming is underway in Room 6. We have 2 set days usually a Tuesday and a Thursday but sometimes we have to re-juggle the times so we let the children know in advance. As per Mr Perreau's letter home swimming is an essential part of the school curriculum we would appreciate a written note/email if your child is not able to swim. We have amazing support this term from Active Swim School so are really looking forward to seeing your child in the pool.

Football is also underway and many children from Room 6 have been asked to attend the free after school training with the coaches who come in on a weekly basis. More detail will follow if your child has shown a keen interest to attend these with the coaches.

Kiwi Can has been a really important part of Room 6's programme. This is a weekly programme that helps the children to focus on key areas of learning and activities that help them navigate a variety of situations both inside and outside the classroom. The children love this time and learn a lot from these sessions.

We extend an invitation to all parents and guardians to visit our classroom or arrange a meeting at your convenience. Your involvement is an integral part of your child's education journey, and we would love to share the wonderful progress they've made with you.

Thank you for entrusting us with the privilege of educating your children. As we continue to learn and grow together, we are filled with anticipation for all the amazing experiences that lie ahead. Your support and partnership mean the world to us.

Ngā mihi nu

Andrew Te Aotonga, Kris Sheath and Room 6

Andrew Te Aotonga andrewt@glenbrae.school.nz

Kris Sheath kriss@glenbrae.school.nz



Keeping up with Room 7

Talofa lava, its has been a very busy start to our term with our learning and our amazing camp. Our first module for learning this term was Ko Wai Tatou? We learnt about each member of our class during this unit. We also unpacked who we are as a class and I am very proud to say, we are building whakawhanaungatanga in our class everyday.

You will have noticed your child coming home with home learning activities. These learning activities are for your child to consolidate what we have been learning in class. There is a great need for our class members to improve in maths and literacy.

For maths, we have been learning algebra and we are now moving on to measurement. We currently have a class challenge to read as many novels as we can. We have a few students who have read at least one novel this term and are on to their second novel. We also have class members who are struggling with this challenge. It would be fantastic if you could encourage your child to read at home.

Soon, we will have our Three Way Conferences. I look forward to meeting with you and your child to discuss their learning goals.

Fa'afetai tele lava
Mrs Tofa

CAMP WAS AMAZING! THANK YOU MR PERREAU AND OUR SCHOOL BOT FOR GIVING US THIS WONDERFUL OPPORTUNITY FOR FREE. THANK YOU MR TE AOTONGA FOR ORGANISING CAMP AND ALL THE TEACHERS, TEACHER AIDES AND ADULT HELPERS FOR HELPING WITH CAMP. AN EXPERIENCE WE WILL NEVER FORGET.



WHAT IS HAPPENING IN

1st March 2023 ROOM 8?

Kia Ora to all our families, both returning and new, joining us this year at Glenbrae School. The first few weeks since our return have been filled with excitement and busy learning filled with activities. Our Year 7/8 seniors embarked on their first camp, where they embraced challenges, displayed teamwork skills, and pushed their individual limits. The experience was immensely enjoyed by all students. It's been a joy to witness students reconnecting, building positive relationships, and immersing themselves in their learning.

Room 8 has wasted no time diving into various activities, including swimming lessons, Kelly Sport sessions, football sessions, and making the most of our Kiwi Can classes.

As our 3-way conferences are approaching next week, I eagerly anticipate the opportunity to meet and engage with families, discussing their child's progress and learning journey. I'm excited to collaborate with parents and caregivers to explore how we can work together to best support our students.



**Contact Details - Required to contact you in times of
Emergency**

Parents please fill in your updated contact details and return this page to the office if any have changed, otherwise please leave blank.

Address where the child lives:

Name of Father / Caregiver:

Mobile Number: _____

E-mail address: _____

Home of father: _____

Name of Mother / Caregiver:

Mobile Number: _____

E-mail address: _____

Home of mother: _____

In case of emergency - contact person:

Name: _____

Relationship with child: _____

Mobile Number: _____

E-mail address: _____